

# PoWoGaz Class B Water Meter - Threaded BSP



WM 01

Single Jet, Class B, Water Meter. Brass Body, Dry Dial.  
For Horizontal or Vertical Installation.



### Pressure / Temperature Specifications

Maximum Pressure	PN16
Maximum Temperature	30°C

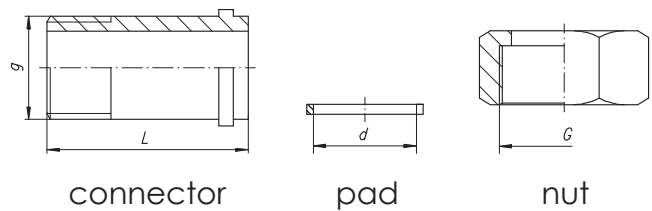
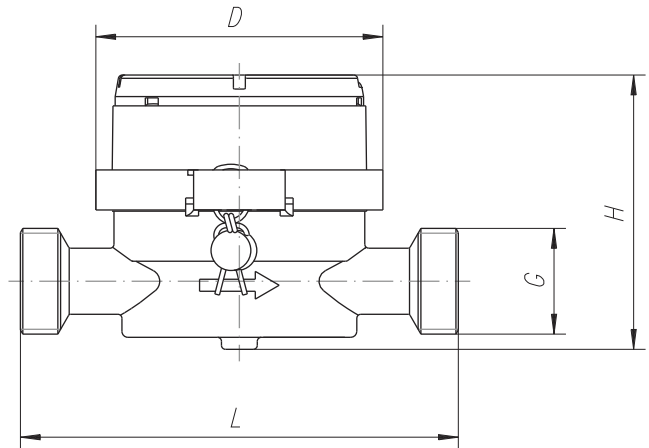
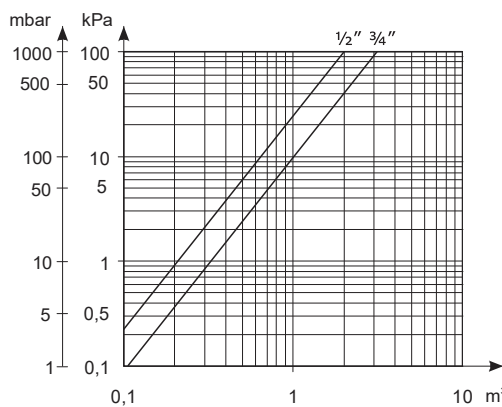
### Meter Dimensions

Size	G	H	L	D	Kg
1/2"	3/4"	68.5	110	72	0.5
3/4"	1"	68.5	130	72	0.6

### Connector Dimensions

g	G	d	L
1/2"	3/4"	17	40
3/4"	1"	23	50

### Pressure Loss Chart



### Technical Parameters

	Unit		1/2"	3/4"
Continuous Flow Rate (Q <sub>3</sub> )	M <sup>3</sup> /h		1.6	2.5
Maximum Flow Rate (Q <sub>4</sub> )	M <sup>3</sup> /h		2.0	3.125
Indirect Flow Rate (Q <sub>2</sub> )	dm <sup>3</sup> /h	Horizontal	25.6	40.0
		Vertical	51.2	80.0
Minimum Flow Rate (Q <sub>1</sub> )	dm <sup>3</sup> /h	Horizontal	16.0	25.0
		Vertical	32.0	50.0
Starting Flow	dm <sup>3</sup> /h		6.0	8.0
Ratio (Q <sub>2</sub> / Q <sub>1</sub> )			1.6	1.6
Nominal Working Temperature			30°C	30°C
Resistance Classes to Flow Profiles			U0	U0
Indication Range	m <sup>3</sup>		10 <sup>5</sup>	10 <sup>5</sup>
Indication Accuracy	m <sup>3</sup>		0.00005	0.00005
Maximum Pressure (P <sub>max</sub> )	MPa		1.6	1.6
Maximum Pressure Loss for Q <sub>3</sub> (Δp)	kPa		63.0	63.0
Permissible Error Range: Q <sub>2</sub> ≤ Q ≤ Q <sub>4</sub> (ε)	%		± 2	± 2
Permissible Error Range: Q <sub>1</sub> ≤ Q ≤ Q <sub>2</sub> (ε)	%		± 5	± 5