

Bellows - Flanged PN16

LV 9832

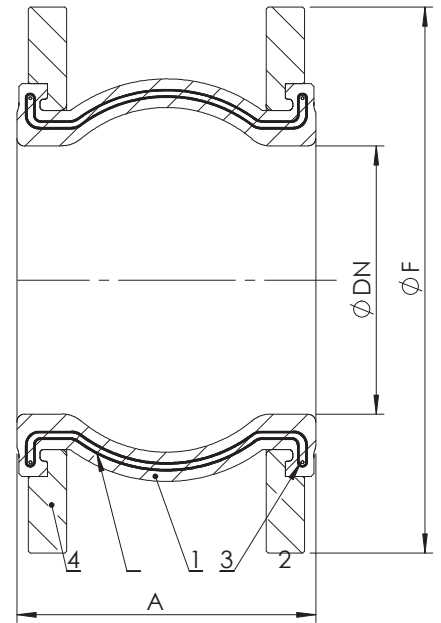
Flanged PN16, Galvanized Steel Flanges, NBR Bellow

Pressure / Temperature	
Pressure	PN16
Temperature	-10°C to 80°C



Material Specifications	
1. Bellow	NBR
2. Reinforcement	Nylon
3. Retaining Ring	Steel
4. Flanges	Galvanized Carbon Steel

Dimensions								
DN	A	F	Com ¹	Ext ²	Lat ³	Ang ⁴	Kv	Kg
1½"	93	150	8	4	8	15	255.0	3.8
2"	99	165	8	4	8	15	435.0	4.2
2½"	108	185	12	6	10	15	672.0	4.8
3"	116	200	12	6	10	15	947.0	6.3
4"	129	220	12	10	12	15	1,508	7.2
5"	142	250	16	10	12	15	2,633	9.3
6"	156	285	16	10	12	15	4,261	11.6
8"	177	340	20	14	18	15	5,957	17.5
10"	206	405	20	14	18	15	10,510	25.5
12"	217	460	20	14	18	15	TBC	31.5



- ¹ Com = Compression (mm)
- ² Ext = Extension (mm)
- ³ Lat = Lateral Deflection (mm)
- ⁴ Ang = Angular Deflection (degrees)

