

Ductile Iron Lugged & Tapped Butterfly Valve - Low Torque



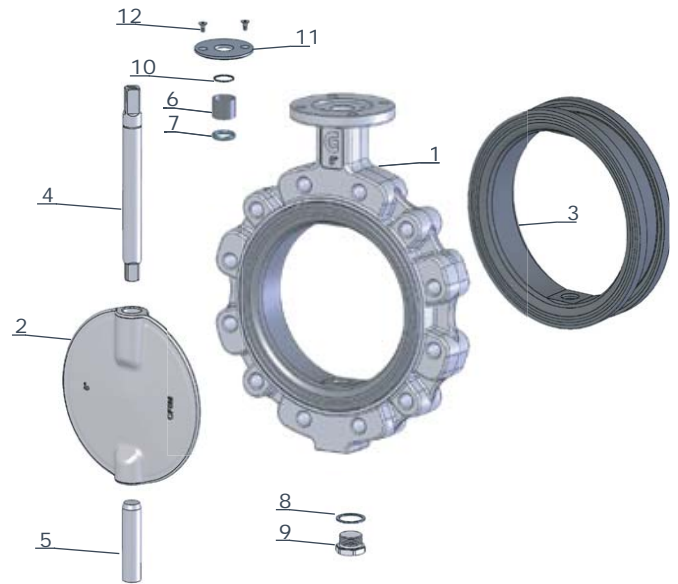
Lugged **PN10/16**, ISO 5211 for Direct Mount, **Low Torque Design**,
Epoxy Coated Ductile Iron Body, 316 Stainless Steel Disc,
Complies with 97/23/CE (PED) Directive CE 1115, ATEX Approved.

LV 9514 = NBR Liner

LV 9512 = EPDM Liner

Pressure / Temperature Specifications	
Pressure	PN10
NBR Temperature	-10°C to 100°C
EPDM Temperature	-10°C to 130°C

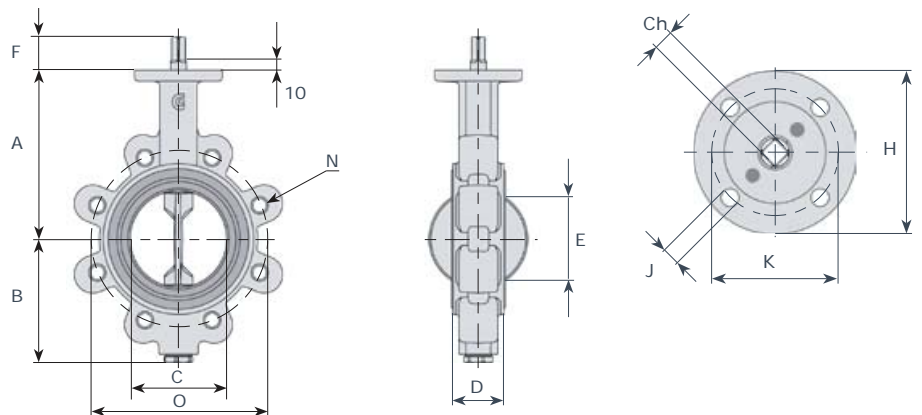
Material Specifications	
1. Body	Epoxy Coated GS400 Ductile Iron
2. Disc	316 Stainless Steel
3. Liner	NBR or EPDM
4. Upper Shaft	430 Stainless Steel
5. Lower Shaft	430 Stainless Steel
6. Bush	Bronze
7. Shaft Packing	NBR
8. Plug Packing	Aluminium
9. Threaded Plug	Zinc Plated Steel
10. Stop Ring	Steel
11. Upper Flange	IXEF Polyarylamide*
12. Screw	Zinc Plated Steel



*Aluminium on DN200 8"

Dimensions													
DN	A	B	C	D	E	F	ØI	Ch	H	K	J	ISO	Kg
2"	138	81	55	43	35	34	14	11	90	70	9	F07	3.7
2½"	144	98	68	46	50	34	14	11	90	70	9	F07	5.3
3"	158	110	81	46	67	34	14	11	90	70	9	F07	6.1
4"	173	128	101	52	87	34	16	11	90	70	9	F07	8.1
5"	186	140	126	56	113	34	18	14	90	70	9	F07	9.7
6"	202	155	150	56	140	34	18	14	90	70	9	F07	11.5
8"	240	190	200	60	191	38	22	17	125	102	11	F10	27.0

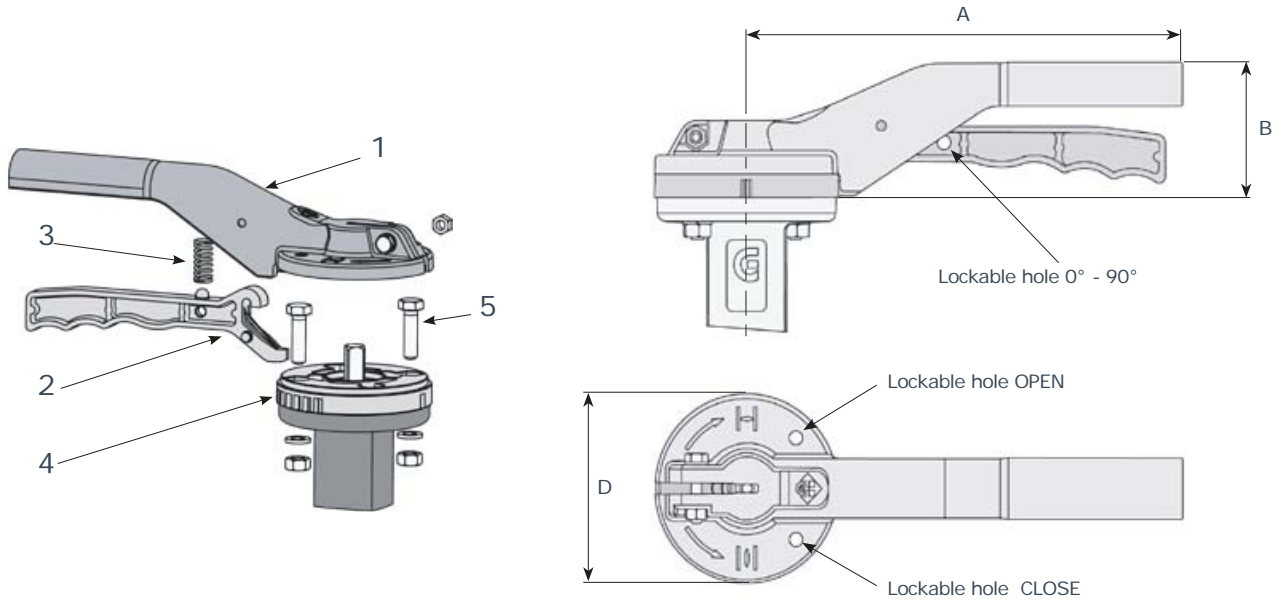
Dimensions				
DN	N	PN10	PN16	O
2"	M16	x4	x4	125
2½"	M16	x8	x8	145
3"	M16	x8	x8	160
4"	M16	x8	x8	180
5"	M16	x8	x8	210
6"	M20	x8	x8	240
8"	M20	x8	x12	295



Continues on page 2

Ductile Iron Wafer Pattern Butterfly Valve - Low Torque

LV 9506 NBR / LV 9509 EPDM



Dimensions				
DN	A	B	D	Kg
2"	220	67	93	0.6
2½"	220	67	93	0.6
3"	220	67	93	0.6
4"	220	67	93	0.6
5"	275	67	93	0.7
6"	275	67	93	0.7
8"	340	76	125	1.0

Material Specifications	
1. Lever	Aluminium
2. Trigger	Aluminium
3. Spring	Stainless Steel
4. Disc Positioner	Aluminium
5. Screws	Stainless Steel

Torque Figures at 0, 6 and 10 Bar			
DN	0	6	10
2"	11.0	12.0	13.0
2½"	11.0	16.0	16.0
3"	5.0	7.0	11.0
4"	8.0	12.0	24.0
5"	22.0	31.0	40.0
6"	40.0	45.0	49.0
8"	47.0	58.0	90.0

Fluid: Water @ 20°C. Figures without safety.