

Forged Steel Gate Valve - Flanged ANSI 300

LV 7745

Flanged ANSI 300, A105N Forged Steel Body & Bonnet, Outside Screw & Yoke, Solid Wedge, Rising Stem, Handwheel Operated, Designed to API 602

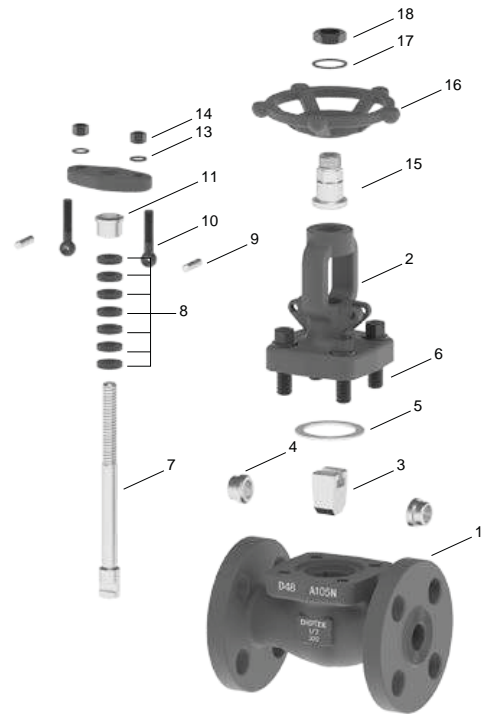


Pressure / Temperature Specifications

Pressure	ASME Class 300
Temperature	-38°C to 538°C

Material Specifications

1. Body	ASTM A105 Forged Carbon Steel
2. Bonnet	ASTM A105 Forged Carbon Steel
3. Disc	ASTM A182 Forged Stainless Steel
4. Seat	ASTM A182 Forged Stainless Steel
5. Gasket	Spiral Wound Stainless Steel + Graphite
6. Bolt	A193 B7 Steel
7. Stem	ASTM A182 Forged Stainless Steel
8. Stem Packing	Braided Graphite
9. Gland Eyebolt Pin	A29 1035 Carbon Steel
10. Bolt	A193 B7 Steel
11. Packing Bush	13Cr
12. Gland Flange	ASTM A105 Forged Carbon Steel
13. Washer	A29 1035 Carbon Steel
14. Nut	A194 2H Carbon Steel
15. Stem Nut	A276 410 Stainless Steel
16. Handwheel	Ductile Iron
17. Washer	A29 1035 Carbon Steel
18. Handwheel Lock Nut	A29 1035 Carbon Steel



Dimensions

DN	L	d	D	D1	D2	b	n x Ød	H	W	Kg
½"	140	15	95	66.7	35	14.5	4 x 16	169	100	5.2
¾"	152	20	115	82.5	43	16	4 x 19	193	125	6.3
1"	165	25	125	89	51	17.5	4 x 19	230	160	8.6
1½"	190	40	155	114.5	73	21	4 x 22	283	180	15.6

