

Forged Steel Gate Valve

Designed to API 602, 13% CR + HFS No. 8 Trim, Tested to API 598



LV7700 = NPT

LV7701 = BSPT

LV7703 = Socket Weld

Pressure / Temperature Specifications

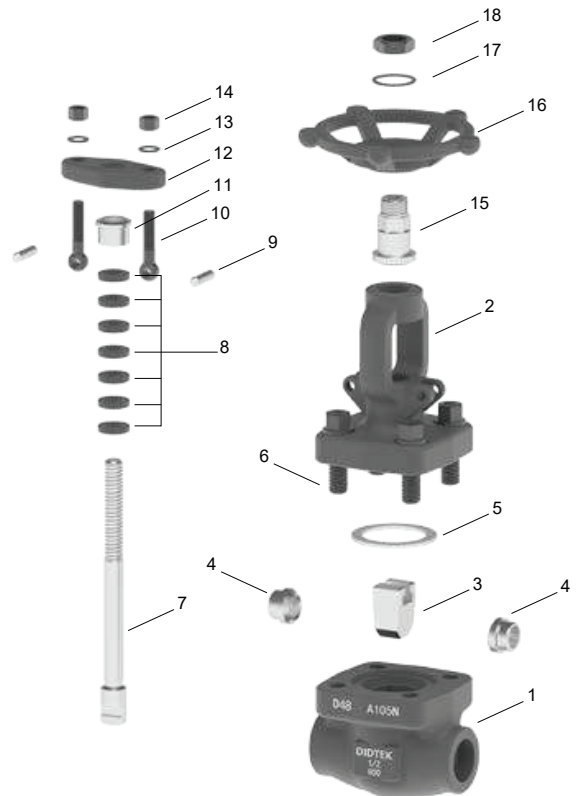
Pressure	ASME Class 800
Temperature	-29°C to 538°C

Pressure / Temperature Table

Temperature (°C)	Pressure (Bar)
-29 to 38	136.2
50	133.7
100	124.3
150	120.2
200	116.8
250	106.2
325	103.2
350	100.2
375	97.0
400	92.6
425	76.7
450	61.3
475	46.5
500	31.4
538	15.7

Material Specifications

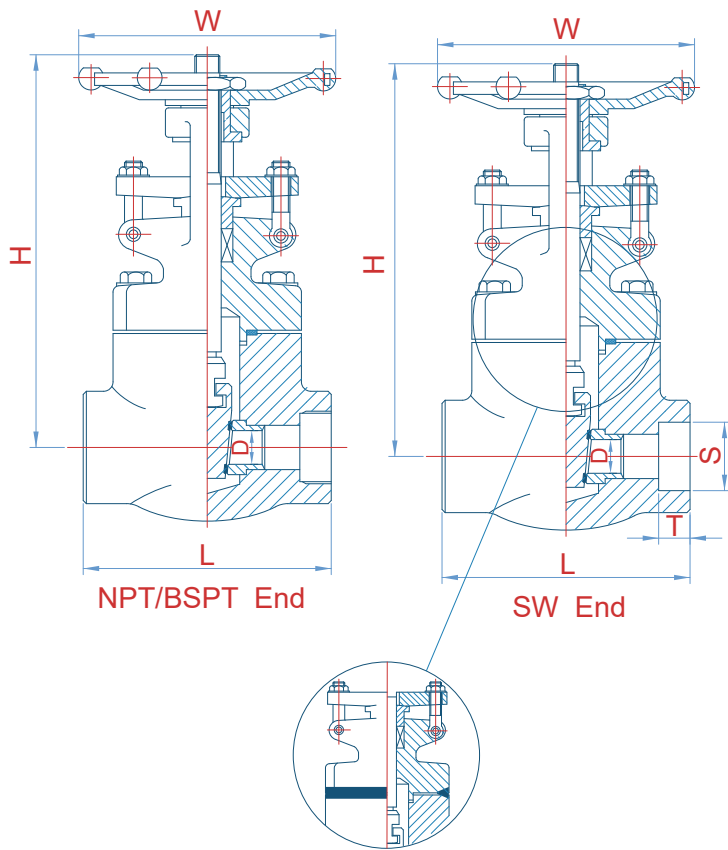
1. Body	ASTM A105 Forged Carbon Steel
2. Bonnet	ASTM A105 Forged Carbon Steel
3. Disc	ASTM A182 Forged Stainless Steel
4. Seat	ASTM A182 Forged Stainless Steel
5. Gasket	Spiral Wound Stainless Steel + Graphite
6. Bolt	A193 B7 Steel
7. Stem	ASTM A182 Forged Stainless Steel
8. Stem Packing	Braided Graphite
9. Gland Eyebolt Pin	A29 1035 Carbon Steel
10. Bolt	A193 B7 Steel
11. Packing Bush	13Cr
12. Gland Flange	ASTM A105 Forged Carbon Steel
13. Washer	A29 1035 Carbon Steel
14. Nut	A194 2H Carbon Steel
15. Stem Nut	A276 410 Stainless Steel
16. Handwheel	Ductile Iron
17. Washer	A29 1035 Carbon Steel
18. Handwheel Lock Nut	A29 1035 Carbon Steel



Continues on Page 2

Forged Steel Gate Valve

LV 7700 NPT / LV 7701 BSPT / LV 7703 Socket Weld



Dimensions							
DN	L	D	S	T	H	W	Kg
1/2"	79	10.5	21.8	10	160	100	2.22
3/4"	92	13.5	27.2	13	166	100	2.39
1"	111	17.5	33.9	13	198	125	4.24
1 1/2"	120	29	48.8	13	253	160	6.8
2"	140	36	61.2	16	286	180	10.1