

Stainless Steel Swing Check Valve - Wafer Type

LV 6820

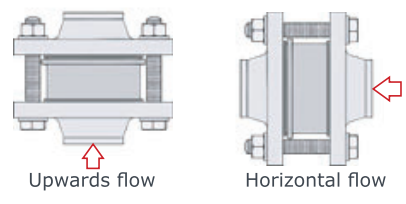
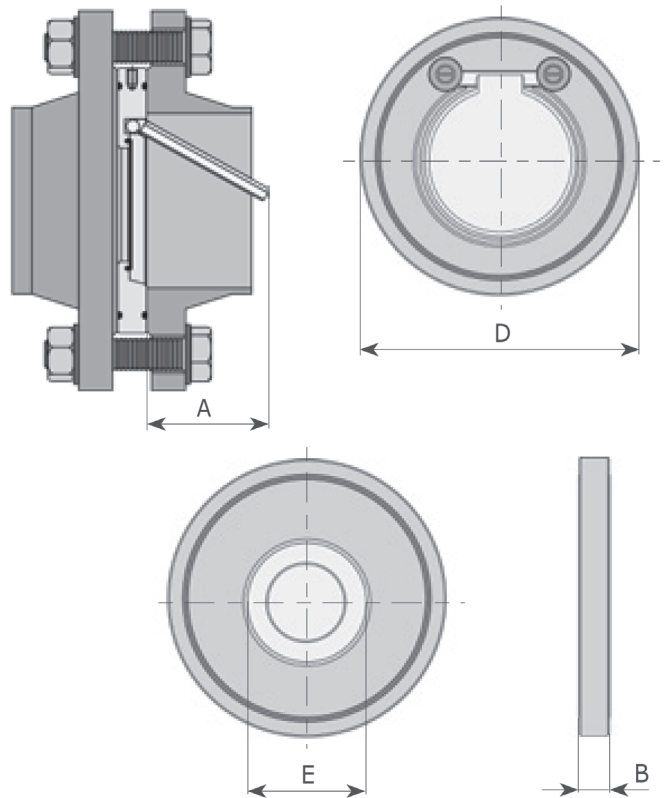
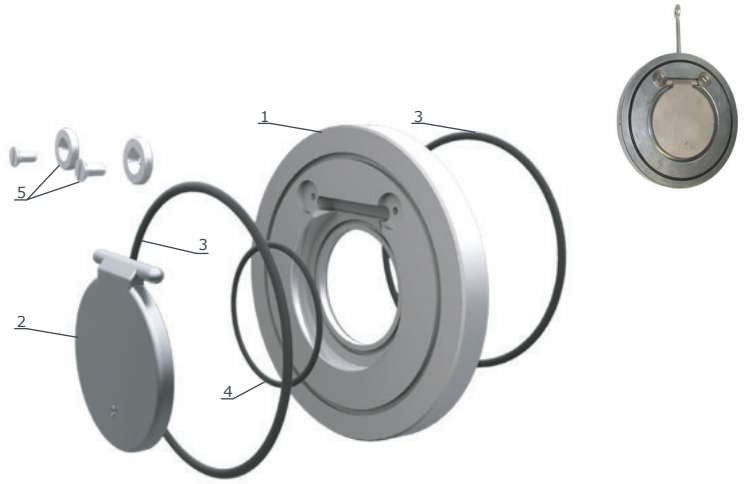
Wafer Pattern, Stainless Steel Body & Disc.

Temperature Specifications		
Temperature:	EPDM	0°C to 130°C
	NBR	0°C to 95°C
	Viton	0°C to 200°C
	PTFE	0°C to 200°C

Material Specifications	
1. Body	AISI 316 Stainless Steel
2. Disc	AISI 316 Stainless Steel
3. Seal	EPDM / NBR / Viton / PTFE
4. Seal	EPDM / NBR / Viton / PTFE
5. Screw	AISI 316 Stainless Steel

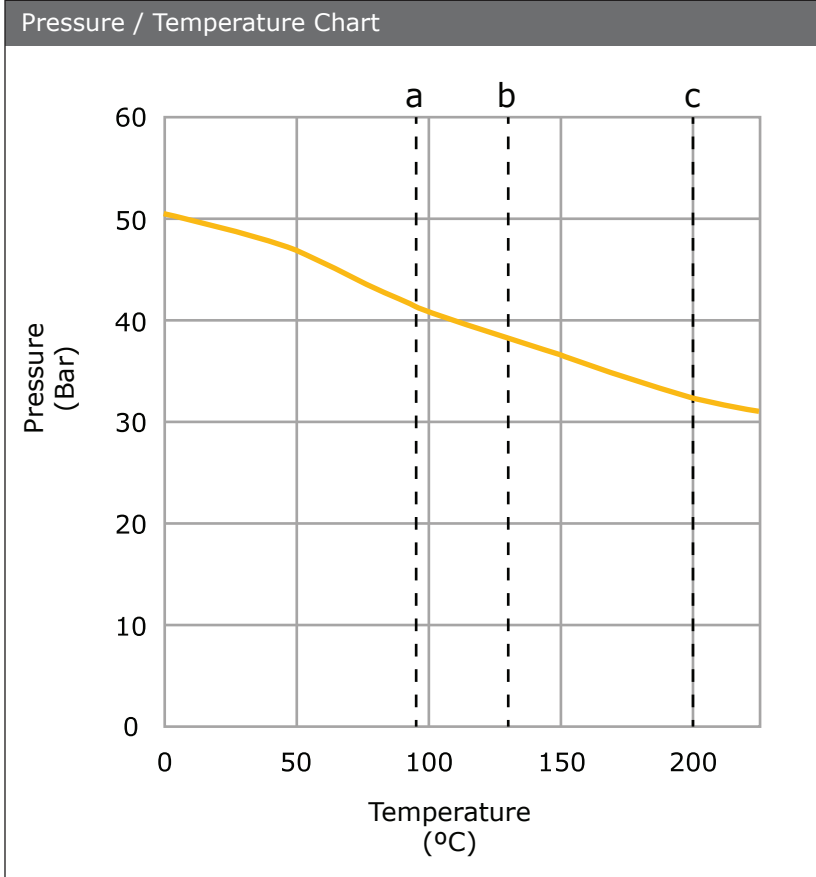
Pressure and Flange Specifications		
Size	Suitable for	Pressure
1½"	PN10, 16, 25, 40, ANSI 300	PN52
2"	PN10, 16, 25, 40, ANSI 300	PN52
2½"	PN10, 16, 25, 40, ANSI 300	PN52
3"	PN10, 16, 25, 40, ANSI 300	PN52
4"	PN10, 16	PN16
5"	PN10, 16, 25, 40, ANSI 150	PN20
6"	PN10, 16, ANSI 150	PN20
8"	PN10, 16	PN16
10"	PN10, 16	PN16
12"	PN10	PN10
14"	PN10	PN10
16"	PN10	PN10

Dimensions					
Size	A	D	E	B	Kg
1½"	30	95	22	14	0.7
2"	35	109	32	14	0.9
2½"	48	128	40	14	1.2
3"	60	145	54	14	1.5
4"	78	164	70	18	2.5
5"	98	195	92	18	3.2
6"	117	221	112	20	5.3
8"	160	275	154	22	9.7
10"	200	330	200	26	16.2
12"	235	380	240	32	28.0
14"	258	440	270	38	32.0
16"	300	490	310	44	48.0



Stainless Steel Swing Check Valve - Wafer Type

LV 6820



- a) NBR, Maximum 95°C
- b) EPDM, Maximum 130°C
- c) Viton/PTFE, Maximum 200°C

