

# Carbon Steel Swing Check Valve - Wafer Type

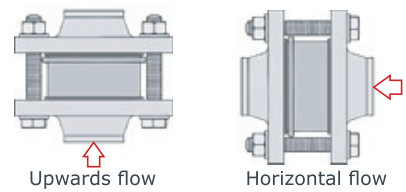
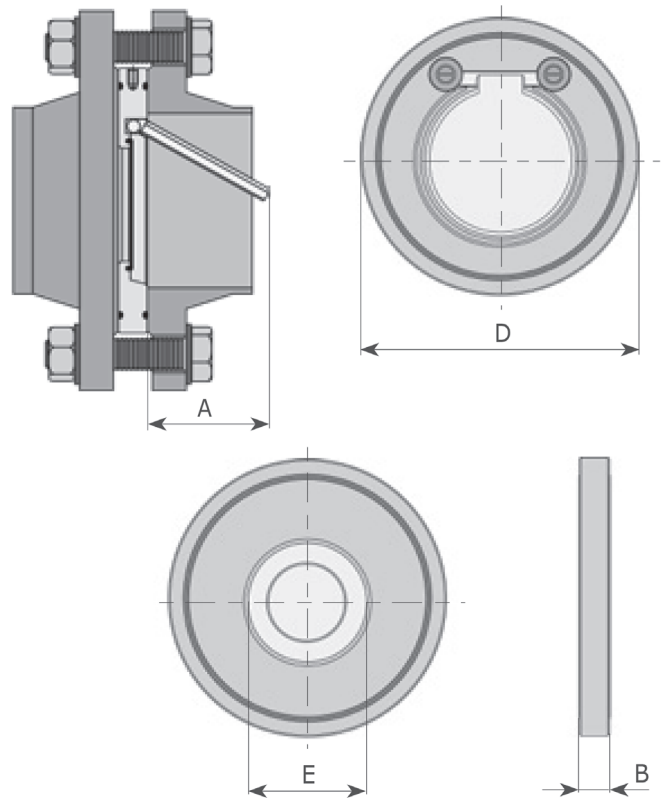
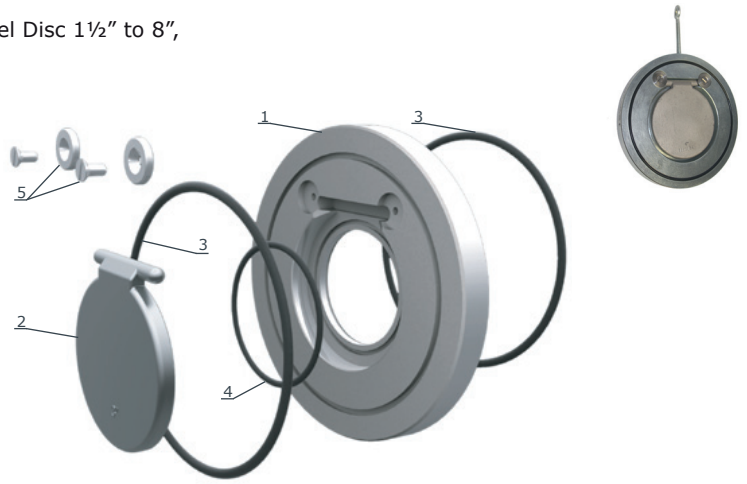
LV 5270

**Wafer Pattern**, Zinc Plated Carbon Steel Body, Stainless Steel Disc 1½" to 8",  
Zinc Plated Carbon Steel Disc 10" & 12".

Temperature Specifications		
Temperature:	EPDM	0°C to 130°C
	NBR	0°C to 95°C
	Viton	0°C to 200°C
	PTFE	0°C to 200°C

Material Specifications	
1. Body	Zinc Plated Carbon Steel
2. Disc	AISI 316 Stainless Steel 1½" to 8" Zinc Plated Carbon Steel 10" & 12"
3. Seal	EPDM / NBR / Viton / PTFE
4. Seal	EPDM / NBR / Viton / PTFE
5. Screw	AISI 316 Stainless Steel

Pressure and Flange Specifications		
Size	Suitable for	Pressure
1½"	PN10, 16, 25, 40	PN40
2"	PN10, 16, 25, 40, ANSI 300	PN52
2½"	PN10, 16, 25, 40, ANSI 300	PN52
3"	PN10, 16, 25, 40, ANSI 300	PN52
4"	PN10, 16	PN16
5"	PN10, 16, 25, 40, ANSI 150	PN20
6"	PN10, 16, ANSI 150	PN20
8"	PN10, 16	PN16
10"	PN10, 16	PN16
12"	PN10	PN10



Dimensions					
Size	A	D	E	B	Kg
1½"	30	95	22	14	0.7
2"	35	109	32	14	0.9
2½"	48	128	40	14	1.2
3"	60	145	54	14	1.5
4"	78	164	70	18	2.5
5"	98	195	92	18	3.2
6"	117	221	112	20	5.3
8"	160	275	154	22	9.7
10"	200	330	200	26	16.2
12"	235	380	240	32	28.0

