

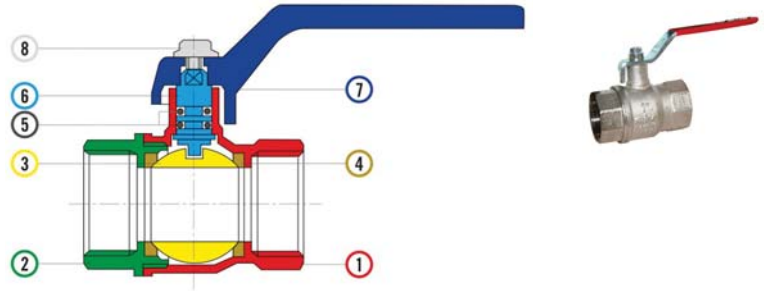
Brass Ball Valve - Standard Pattern



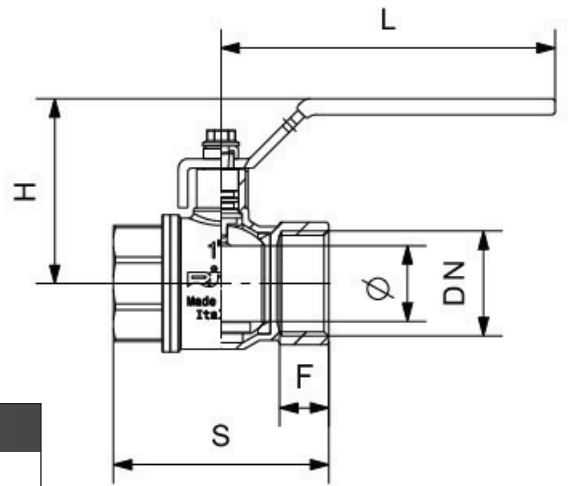
LV 4175

Screwed BSPP, Nickel Plated Body, Full Bore, PVC Coated Steel Lever

Pressure / Temperature Specifications	
Pressure	PN64 ¼" & ⅜"
	PN40 ½"
	PN32 ¾" & 1"
	PN25 1¼" to 2½"
	PN16 3" & 4"
Temperature	-20°C to 110°C



Material Specifications		
1.	Body	Nickel Plated Brass CW 617 N
2.	Body End	Nickel Plated Brass CW 617 N
3.	Ball	Chrome Plated Brass CW 617 N
4.	Seats	PTFE
5.	O-ring	NBR
6.	Stem	Brass CW 614 N
7.	Lever	PVC Coated Steel
8.	Screw	Zinc Plated Steel



Dimensions									
Size	Ø	H	S	L	F	Kv	Cv	Kg	
¼"	10	45	45	80	12	3.6	4.2	0.13	
⅜"	10	45	45	80	12	6.6	76.0	0.14	
½"	14.5	47	48	80	13	16.5	19.1	0.16	
¾"	19	53	57	90	14	25.0	29.0	0.26	
1"	24	58	69	90	16.5	46.0	53.0	0.39	
1¼"	30.5	69	79	120	18	87.0	101.0	0.59	
1½"	37	81	89	135	19	140.0	162.0	0.88	
2"	47	94	109	160	22.5	275.0	318.0	1.42	
2½"	60	106	126	160	23	500.0	578.0	2.21	
3"	75	142	147	265	25	850.0	983.0	3.84	
4"	94	160	177	265	29	1350.0	1562.0	6.35	

