

# Brass / Bronze Safety Relief Valve - Inline

Screwed BSPP Female, Cap Top

**LV 1097 = Metal Seat    LV 1099 = PTFE Seat**



## Pressure / Temperature Specifications

Pressure	PN16 ½" to 2"
	PN10 2½" to 4"
Temperature	-10°C to 220°C

## Material Specifications

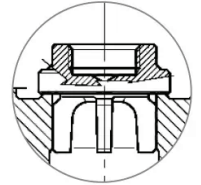
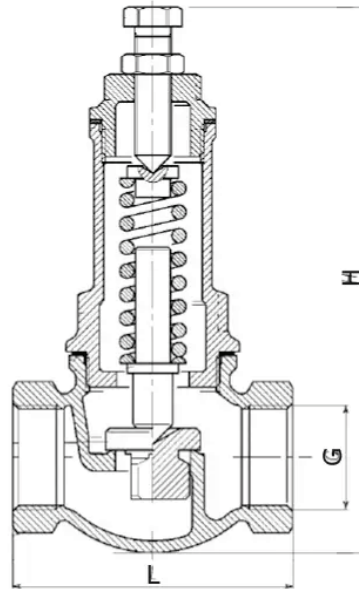
Body	Bronze
Bonnet	Brass
Internals	Brass
LV 1097 Seat	Bronze
LV 1099 Seat	PTFE
Spring	Steel

## Dimensions

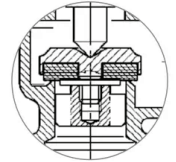
G	H	L	Kg
½"	112	59	0.4
¾"	145	71	0.7
1"	164	81	1.05
1¼"	196	96	1.55
1½"	214	104	2.2
2"	240	128	3.4
2½"	293	155	6.4
3"	307	173	8.55
4"	390	199	13.9

## Spring Ranges (Bar)

½"	0.1 - 2	2 - 6	6 - 16
¾"	0.1 - 2	2 - 6	6 - 16
1"	0.1 - 2	2 - 4	4 - 8    8 - 16
1¼"	0.1 - 2	2 - 4	4 - 8    8 - 16
1½"	0.1 - 2	2 - 4	4 - 8    8 - 16
2"	0.1 - 2	2 - 4	4 - 8    8 - 16
2½"	0.1 - 2		2 - 10
3"	0.1 - 2		2 - 10
4"	1.5 - 3.5		5 - 10



versione sede metallo  
metal version



versione sede PTFE  
PTFE version