

Float Steam Trap

LV1820

Flanged PN16, Ductile Iron Body, Stainless Steel Internals, Integral Air Vent

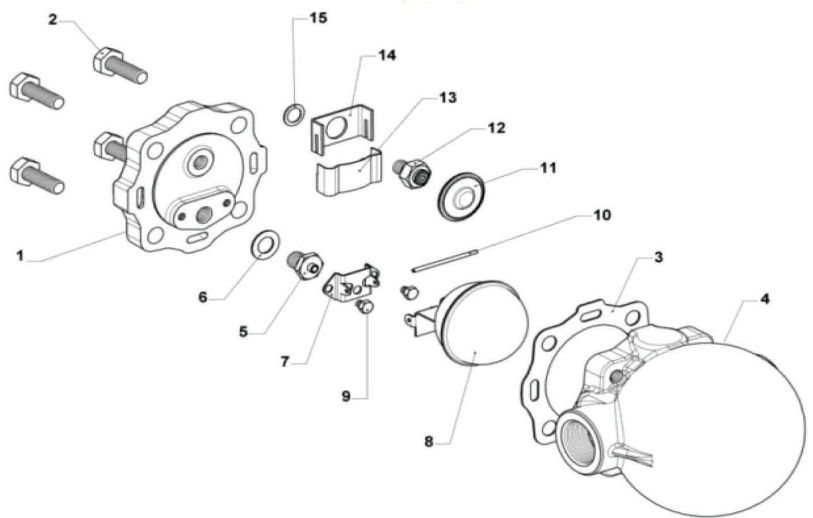


Pressure / Temperature Specifications

Pressure	PN16
Temperature	250°C Maximum

Material Specifications

1. Cover	WCB Carbon Steel
2. Cover Bolt	AISI 304 Stainless Steel
3. Cover Gasket	AISI 420 Stainless Steel
4. Body	PTFE
5. Float Seat	PTFE & Viton
6. Float Seat Gasket	Galvanized Carbon Steel
7. Float Lever Frame	WCB Carbon Steel
8. Float & Lever	AISI 304 Stainless Steel
9. Float Lever Frame Bolt	AISI 420 Stainless Steel
10. Float Lever Spindle	PTFE
11. Capsule	PTFE & Viton
12. Capsule Seat	Galvanized Carbon Steel
13. Capsule Part	PTFE
14. Thermostatic Unit	PTFE & Viton
15. Capsule Seat Gasket	Galvanized Carbon Steel



Discharge Chart

