

Ductile Iron Ball Valve - Flanged PN16 - Direct Mount

LV 5577

ISO 5211 for Direct Mount, Flanged PN16, Ductile Iron Body, Stainless Steel Ball & Stem, RPTFE Seats, Viton O-rings, Steel Lever Operated, DIN 3202 F4 Face to Face 1/2" to 6", F5 8"

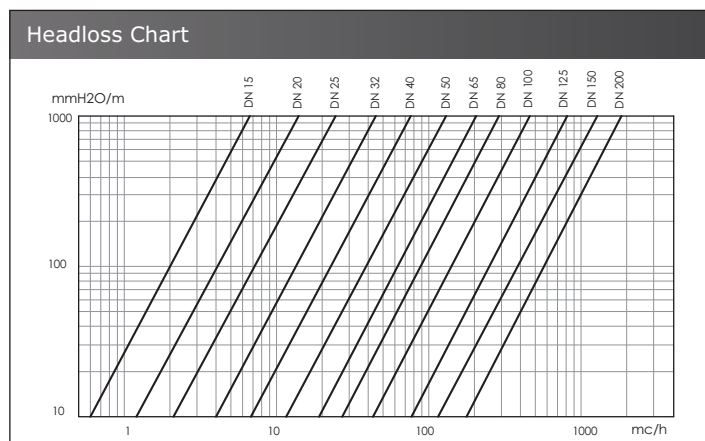
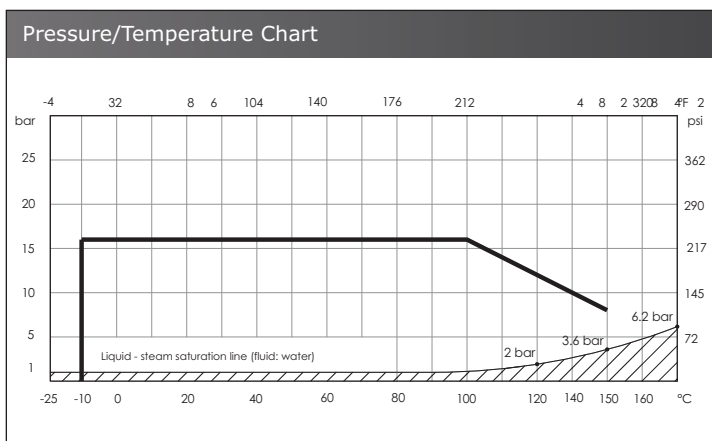
Material Specifications	
1. Body	EN GJS 400-15 Epoxy Coated Ductile Iron
2. Flange	EN GJS 400-15 Epoxy Coated Ductile Iron
3. Ball	AISI 304 Stainless Steel
4. Ball Seat	Reinforced PTFE
5. Stem	AISI 304 Stainless Steel
6. Sliding Washer	PTFE
7. Ring	AISI 304 Stainless Steel
8. O-ring	Viton
9. Lever	Epoxy Coated Carbon Steel
10. Stop Plate	Galvanized Carbon Steel
11. Spring Washer	Galvanized Carbon Steel

Pressure / Temperature Specifications	
Pressure	PN16
Temperature	-10°C to 150°C



Dimensions													
DN	1/2"	3/4"	1"	1 1/4"	1 1/2"	2"	2 1/2"	3"	4"	5"	6"	8"	
P	15	20	25	32	40	50	63	76	95	120	145	190	
A	115	120	125	130	140	150	170	180	190	200	210	400	
H	84	84	96	101	125	135	143	165	180	225	243	320	
H1	50.5	52	59	64	78.5	87	95	118	132.5	165	182.5	230	
B	160	160	170	170	230	230	230	280	360	450	560	1000	
C	95	105	115	140	150	165	185	200	220	250	285	340	
ISO	F04	F04	F04	F04	F05	F05	F05	F07	F07	F10	F10	F12	
J	42	42	42	42	50	50	50	70	70	102	102	125	
n°xØq	4x6	4x6	4x6	4x6	4x7	4x7	4x7	4x9	4x9	4x11	4x11	4x13	
E	11.5	11.5	14.5	14.5	17.5	17.5	17.5	20	20	24.5	24.5	27	
S	9	9	11	11	14	14	14	17	17	22	22	27	
Nm*	15	15	18	18	18	20	40	70	100	180	250	600	
Kv	22.3	47.7	83.5	150.4	255.0	435.0	672.0	947.0	1508.0	2633.0	4261.0	5957.0	
Kg	2.6	3.3	4.2	5.8	7.5	9.0	10.5	15.5	18.5	28.0	38.5	93.0	

*In order to choose the correct actuator, we recommend multiplying the Nm figure by a safety factor of 1.5

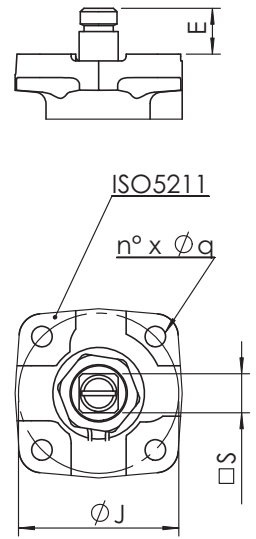
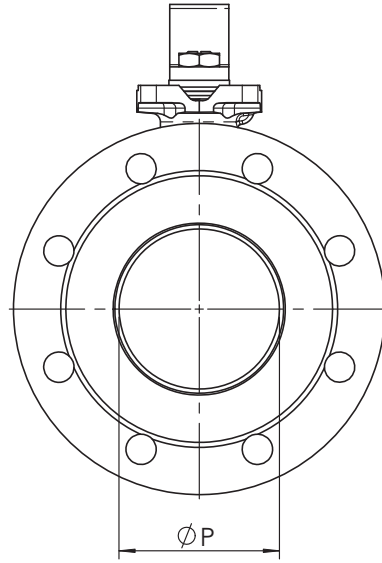
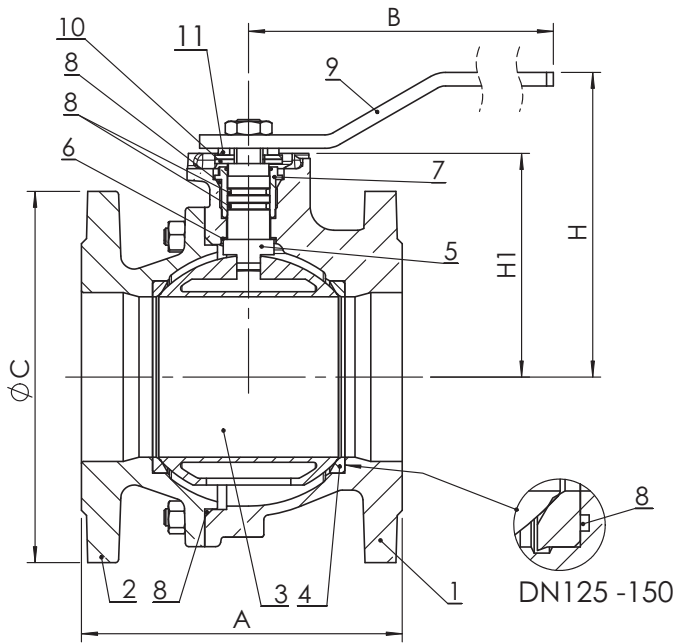


Dimensional drawing on next page

Ductile Iron Ball Valve - Flanged PN16 - Direct Mount

LV 5577

1/2" to 6" Dimensional Drawing



8" Dimensional Drawing

