

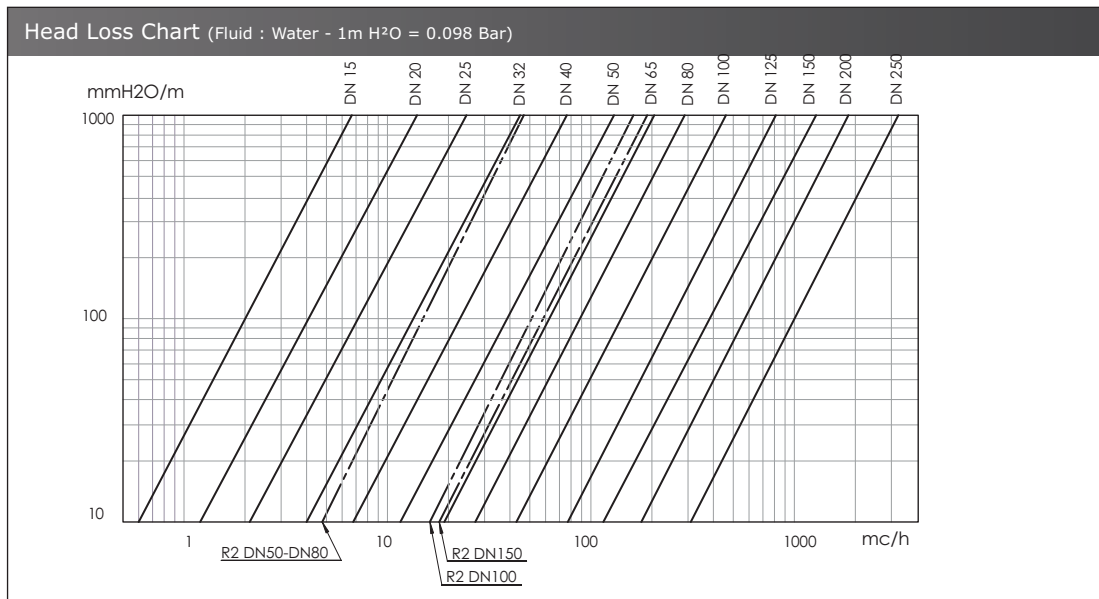
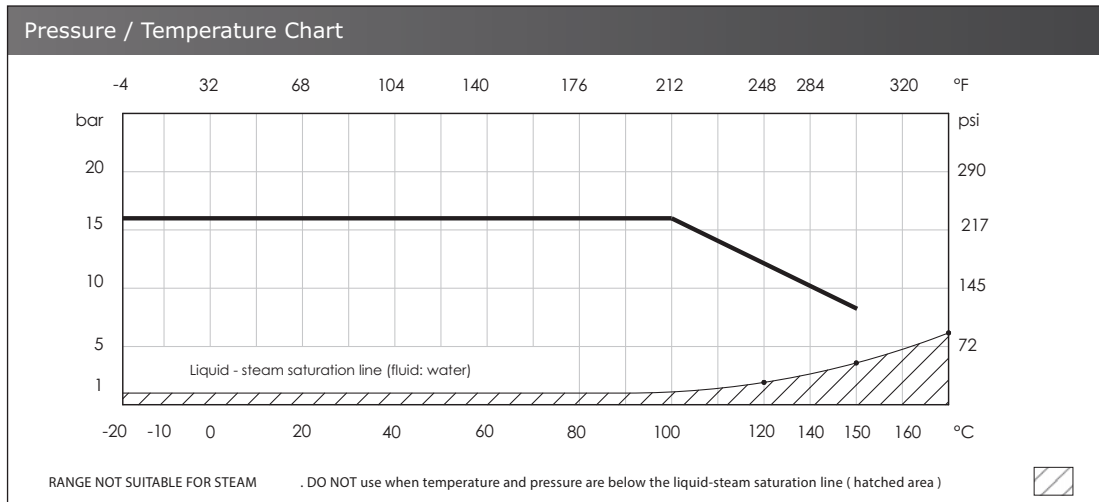
Bronze Ball Valve - Flanged PN16

LV 2555

Flanged PN16, ISO 5211 for Direct Mount, ASTM B62 Body, Full Bore, 316 Stainless Steel Ball & Stem, PTFE Seats, Viton Stem O-rings, Lever Operated, DINF4/F5 Face to Face

Material Specifications		
1.	Body	Bronze
2.	Flange	Bronze
3.	Ball	AISI 316 Stainless Steel
4.	Ball Seat	RPTFE
5.	Stem	AISI 316 Stainless Steel
6.	Sliding Washer	PTFE
7.	Ring	AISI 316 Stainless Steel
8.	O-ring	Viton
9.	Lever	Epoxy Coated Carbon Steel
10.	Stop Plate	AISI 316 Stainless Steel
11.	Spring Washer	AISI 316 Stainless Steel
12.	Lever Hub	Brass
13.	Lever Stop	AISI 316 Stainless Steel
14.	Anti-blow-out Ring	AISI 302 Stainless Steel
15.	Mounting Pad	Aluminium Bronze
17.	Bolts	AISI 302 Stainless Steel

Pressure / Temperature Specifications	
Pressure	PN16
Temperature	-10°C to 150°C

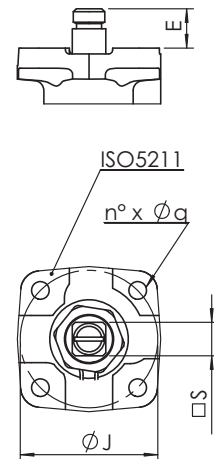
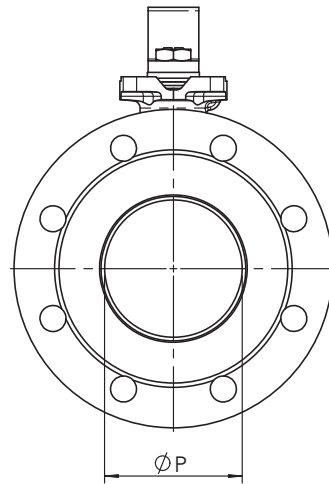
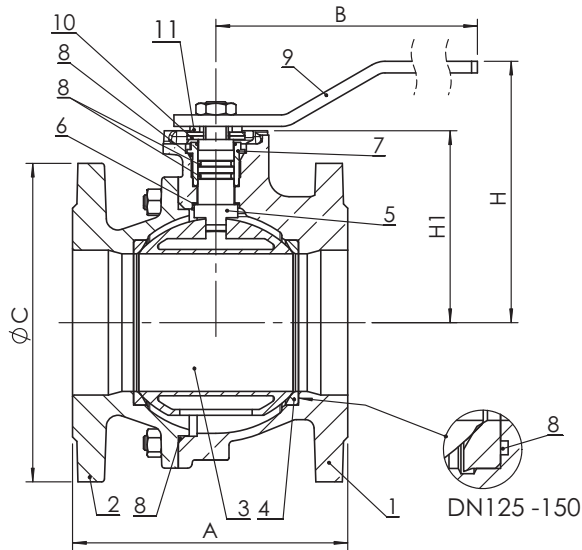


Dimensional Drawing on Next Page

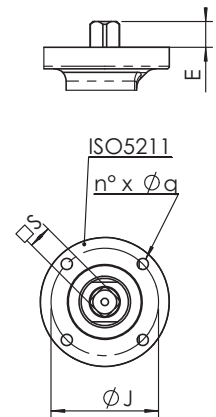
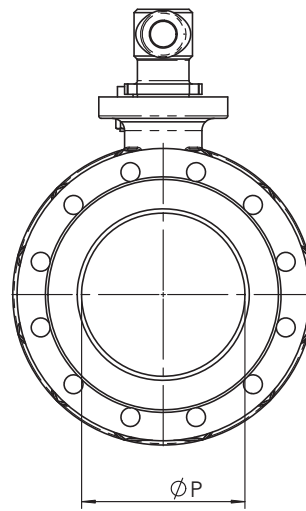
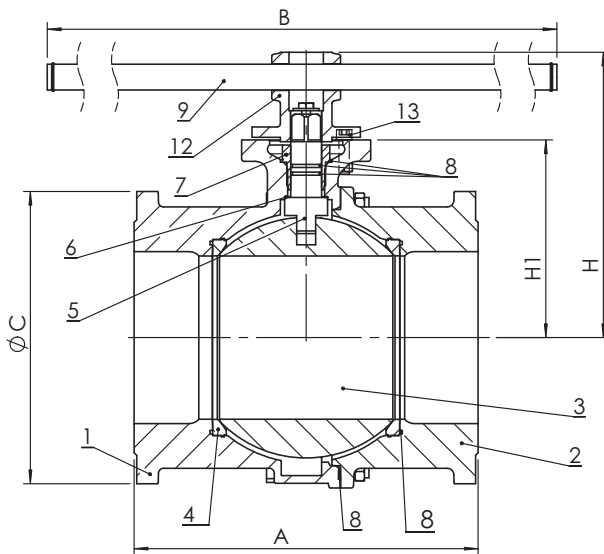
Bronze Ball Valve - Flanged PN16

LV 2555

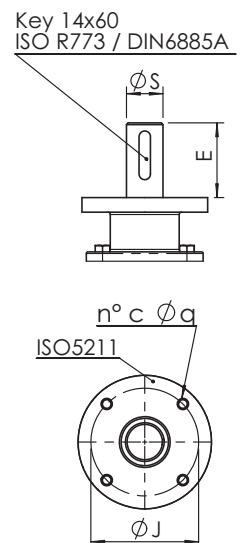
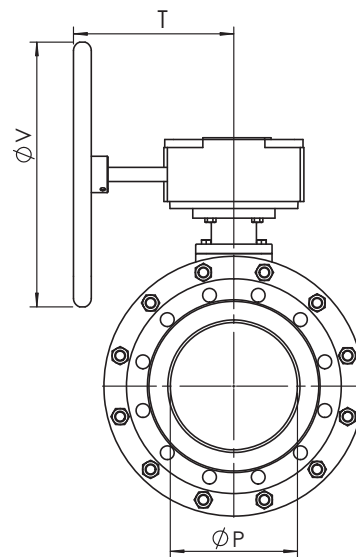
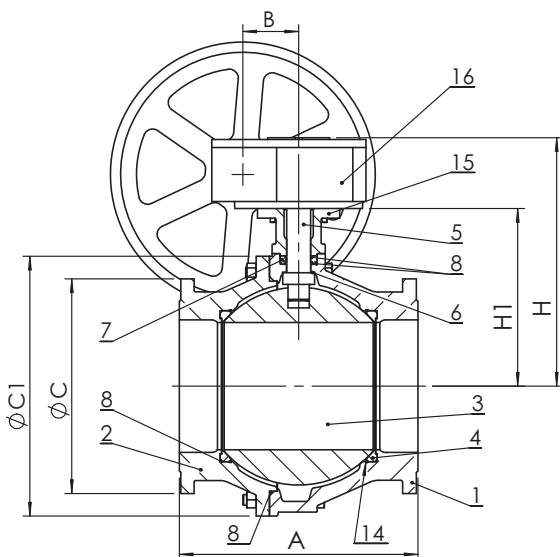
B2.3/7 - DN 15-150



B2.3/7 - DN 200



B2.3/7 - DN 250



Measurement Detail on Next Page

Bronze Ball Valve - Flanged PN16

LV 2555

Dimensions									
DN	P	A	H	H1	B	C	ISO	C1	V
½"	15	115	84	50.5	160	95	F04	-	-
¾"	20	120	84	52	160	105	F04	-	-
1"	25	125	96	59	170	115	F04	-	-
1¼"	32	130	101	64	170	140	F04	-	-
1½"	40	140	125	78.5	230	150	F05	-	-
2"	50	150	135	87	230	165	F05	-	-
2½"	63	170	143	95	230	185	F05	-	-
3"	76	180	165	118	280	200	F07	-	-
4"	95	190	180	132.5	360	220	F07	-	-
5"	120	200	225	165	450	250	F10	-	-
6"	145	210	243	182.5	560	285	F10	-	-
8"	190	400	320	230	1000	340	F12	-	-
10"	240	450	-	355	101	405	F12	490	500

Dimensions									
DN	T	J	n° x Øq	E	S	Kg	Nm	Kv	
½"	-	42	4 x 6	11.5	□9	2.8	15	22.3	
¾"	-	42	4 x 6	11.5	□9	3.4	15	47.7	
1"	-	42	4 x 6	14.5	□11	4.8	18	83.5	
1¼"	-	42	4 x 6	14.5	□11	6.5	18	150.4	
1½"	-	50	4 x 7	17.5	□14	9.3	18	255.0	
2"	-	50	4 x 7	17.5	□14	11.5	20	435.0	
2½"	-	50	4 x 7	17.5	□14	16.0	40	672.0	
3"	-	70	4 x 9	20	□17	20.6	70	947.0	
4"	-	70	4 x 9	20	□17	28.4	100	1508.0	
5"	-	102	4 x 11	24.5	□22	41.2	180	2633.0	
6"	-	102	4 x 11	24.5	□22	52.7	250	4261.0	
8"	-	125	4 x 13	27	□27	131.0	600	5957.0	
10"	-	125	4 x 13	92	Ø45	140.0	2000	10,510.0	