

Cast Iron Swing Check Valve

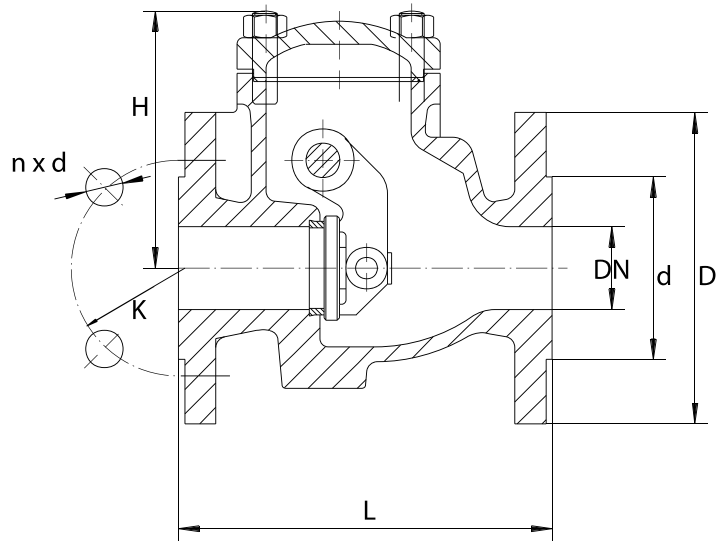
Flanged PN16, Cast Iron Body & Swing, EPDM Seat

Pressure/Temperature Ratings

Pressure	PN16 Rated
Temperature	-10°C to 120°C

Material List

Body	EN-GJL-250
Cover	EN-GJL-250
Hinge	EN-GJS-500-7
Flap	EN-GJS-500-7
Pin Bearing	8" - 12" Brass
Flap Pin	X20Cr13
Pin	X20Cr13
Cover Gasket	Graphite CrNi
Bolt	8.8 A2A
Plug	1½" - 6" 10S20 Zinc Galvanized
	8" - 12" EN-GJL-250 JL1040
Plug Gasket	Carbomide Rubber
Washer	Carbon Steel A2A
Split Pin	X5CrNi18-10
Disc Gasket	EPDM



Dimensions

DN	L	D	d	K	n x d	H	Min Opening Pressure	Min Back Pressure	Kg
40	180	150	84	110	4 x 19	119	0.1 Bar	0.5 Bar	9.0
50	200	165	99	125	4 x 19	120	0.1 Bar	0.5 Bar	11.0
65	240	185	118	145	4 x 19	141	0.1 Bar	0.5 Bar	15.2
80	260	200	132	160	8 x 19	168	0.1 Bar	0.5 Bar	20.8
100	300	220	156	180	8 x 19	175	0.1 Bar	0.5 Bar	31.5
125	350	250	184	210	8 x 19	199	0.1 Bar	0.5 Bar	46.0
150	400	285	211	240	8 x 23	217	0.1 Bar	0.5 Bar	60.0
200	500	340	266	295	12 x 23	277	0.1 Bar	0.5 Bar	120.0
250	600	405	319	355	12 x 28	337	0.1 Bar	0.5 Bar	180.0
300	700	460	370	410	12 x 28	850	0.1 Bar	0.5 Bar	250.0