

# Brass Mini Ball Valve



LV 4004

Screwed BSPP, Polished Chrome Plated Finish, Reduced Bore, Screwdriver Slot



## Pressure / Temperature Specifications

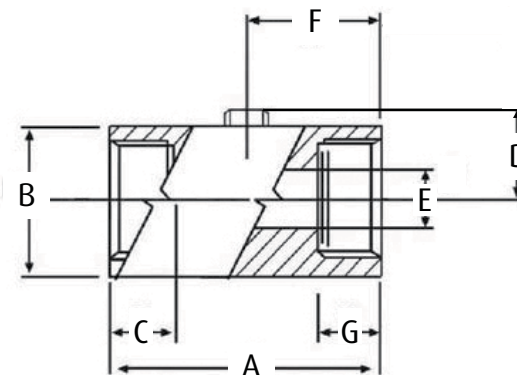
Pressure	PN16
Temperature	-10°C to 90°C

## Material Specifications

Body	Nickel Plated Brass
Sleeve	Brass
Ball	Nickel Plated Brass
Seat	PTFE
Stem O-ring	NBR

## Dimensions

DN	G	C	A	E	B	D	F	Kg
1/8"	9	9	39	6	21	12.5	18	0.09
1/4"	9	9	39	8	21	12.5	18	0.09
3/8"	10	10	42	8	21	12.5	21	0.08
1/2"	10.5	10.5	47	10	25	14.5	24	0.11
3/4"	13.5	13.5	54	12	30	17.0	27	0.19



All information is sourced from our manufacturer's data and is intended for guidance only - Leengate Valves can accept no liability for changes, omissions or errors.